



MetroQuest

Engagement Made Easy

Powerful
Flexible
Cost-Effective



Web



Workshop



Kiosk



Pre-Plan



Plan



Post-Plan

City Shaping - City of North Vancouver

Progress Compare Yourself

1 CHALLENGE **2 SET PRIORITIES** **3 RATE US** **4 ENTER CONTEST**

Rate Us

How are we doing?

Here are your top five priorities. Let us know how we are doing on your top priorities by selecting a star rating for each. You can include a comment with each if you wish.

- 1 Economic Growth**

How are we doing with promoting local business opportunities and creating jobs in the city?

poorly ★★★★★ well
- 2 Cultural Diversity**

How are we doing with welcoming and including all cultures and newcomers?

poorly ★★★★★ well
- 3 Vibrant Streets & Spaces**

How are we doing with encouraging vibrant streets and spaces?

poorly ★★★★★ well
- 4 Parks & Trails System**

How are we doing with enhancing the city's parks and trail system?

poorly ★★★★★ well
- 5 Public Safety**

How are we doing with ensuring a safe community?

poorly ★★★★★ well

Envision Bay Area: A Silicon Valley Community Foundation initiative

View introduction / help video

See Outcomes

What impacts do your choices have?

Your rating: ★★★★★

By 2035, compared to the Current Trend (A), your choices save...

370 square miles of open space.

Current Trend: 490 | Your Choices: 120

Compared to the current trend (A), your choices (C) save **370** square miles of open space, the equivalent of **3** San Franciscos.

Order priorities by: Your Priorities

- Easy and low cost parking
- Lever costs and taxes
- Safer access to schools
- Conserve open space
- Less local traffic
- Clean air
- Lever carbon emissions

Worse than today | Better than today

Send Feedback | Share

About this FUTURE: 2C

Your Choices: **Keep Homes Here** and **More Urban Development**

Likely Future: Urban containment & city-centered growth

In this future, more people live in compact and walkable neighborhoods. By spreading out less, more people are closer to work and shopping, reducing travel distances. This future encourages the development of enough housing to accommodate available jobs in the region.

An Initiative of SILICON VALLEY community foundation with Lead Partner GREENBELT ALLIANCE

Claremore 2050 - Putting the Plan to Work

CITY OF CLAREMORE OKLAHOMA New Vision. Clear Opportunities.

Energy & Emissions | Community Input | Related Projects

Planning Goals

- Commuting & Travel
- Housing Options
- Energy & Emissions
- Natural Areas
- Infrastructure
- Street Life & Culture
- Access to Transit
- Economic Growth

Executive Summary About the Planning Goals

Contact Us What's Next?

Like: 26 | Tweet: 97

Energy & Emissions

Community Input

Related Projects

Lorem ipsum dolor sit amet, consectetur adipiscing elit. Proin vehicula lectus quis orci aliquet sed lacoreet libero euismod. Cras euismod tempor nunc id faucibus. Morbi congue erat quis magna suscipit auctor. Pellentesque felis justo, eleifend at rhoncus eu, facilisis non lacus. Pellentesque vel sem ligula.

Nulla molestie laculis libero id fringilla. In congue, du in suscipit aliquet, libero est interdum mauris, sed vulguate tortor enim id lorem. Donec tincidunt odio non massa adipiscing rutrum.

Quantiles By

Yearly

2000 2005 2010 2015 2020

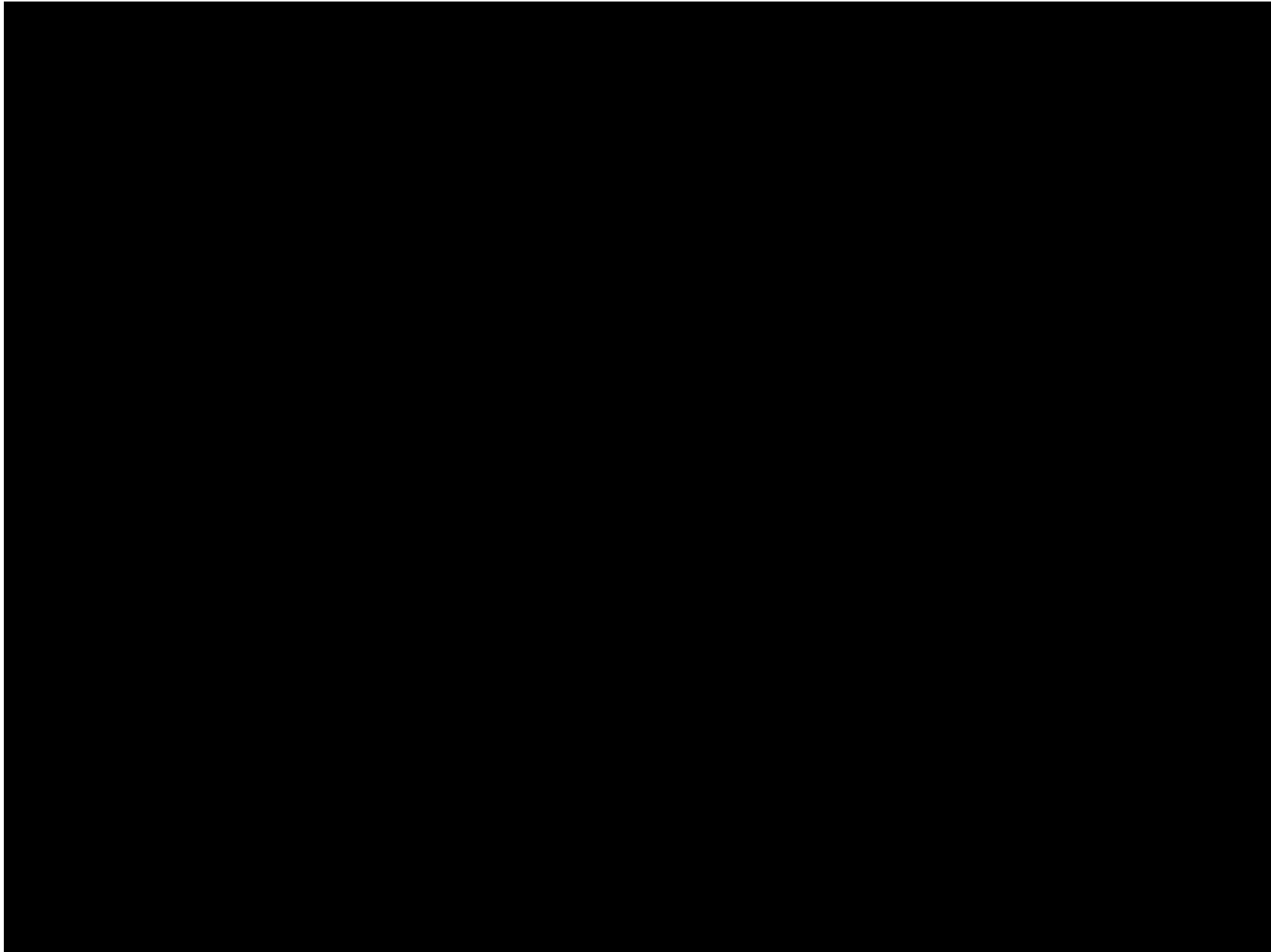
Health

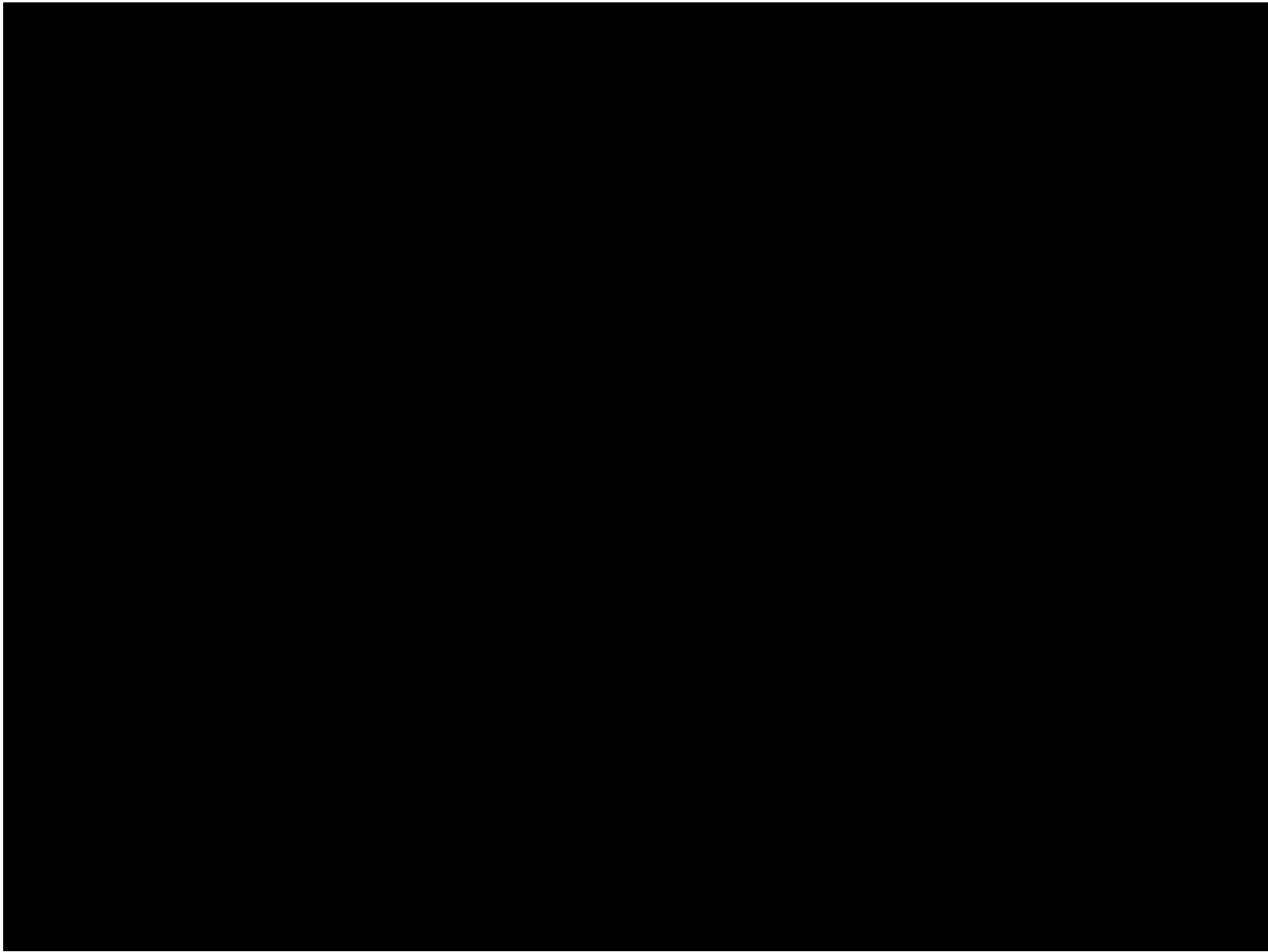
Quality of Life

Environment

Education

Income





1 Our Challenge How should the corridor evolve?

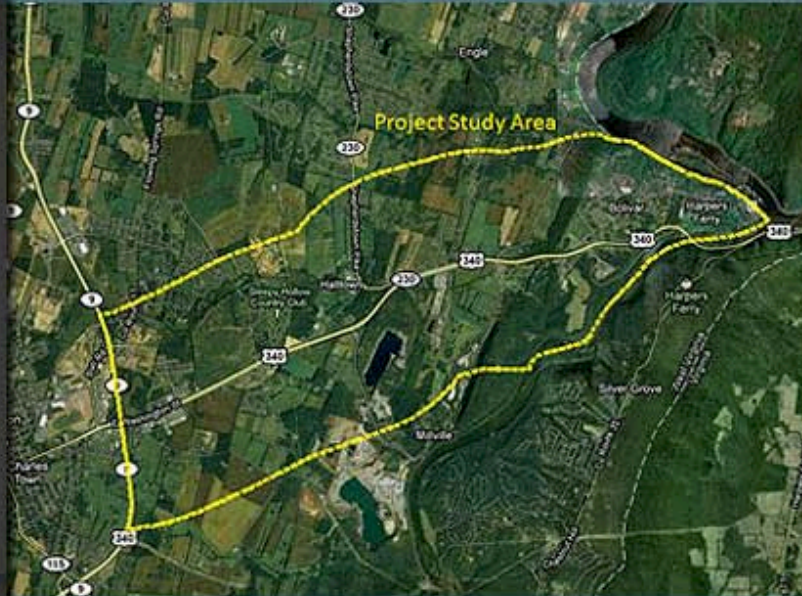
CHALLENGE



US 340 Corridor East Gateway Plan

Slide 2 of 3

This study focuses on the land area located along US Route 340 between Charles Town and Harpers Ferry, West Virginia.



2

PRIORITIES

3

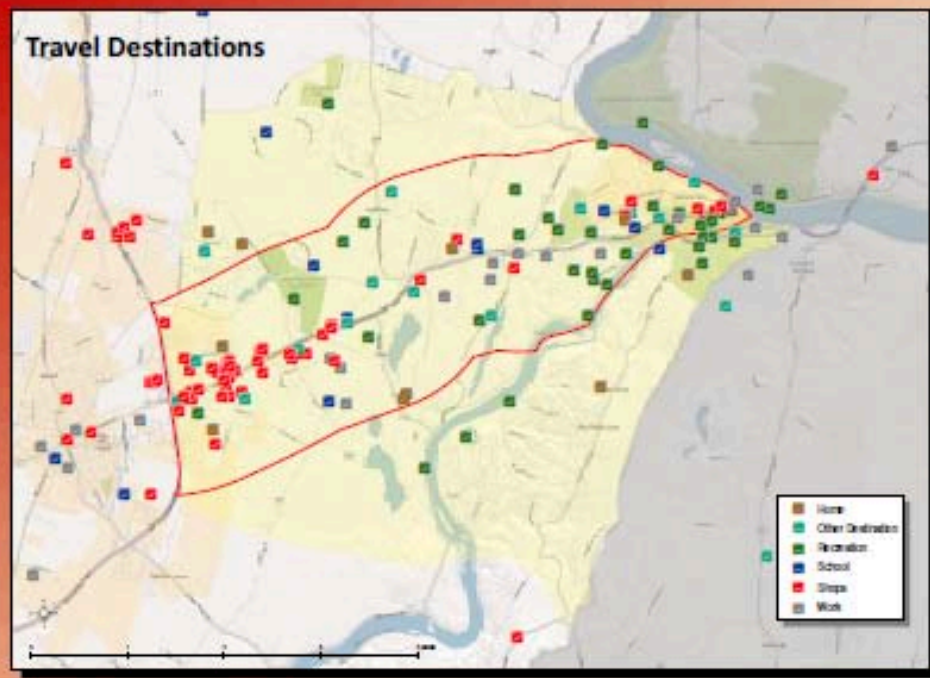
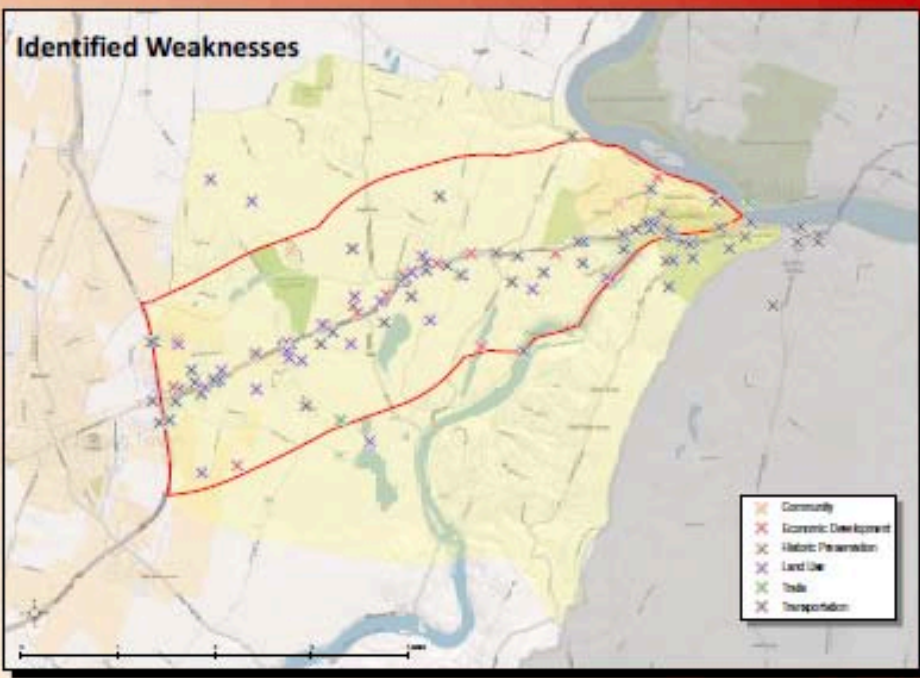
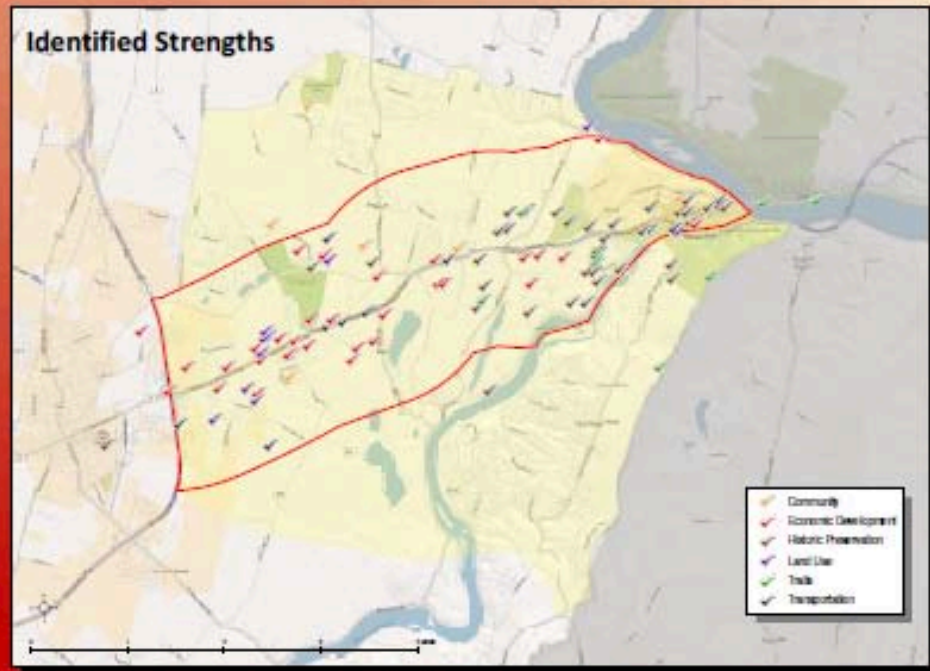
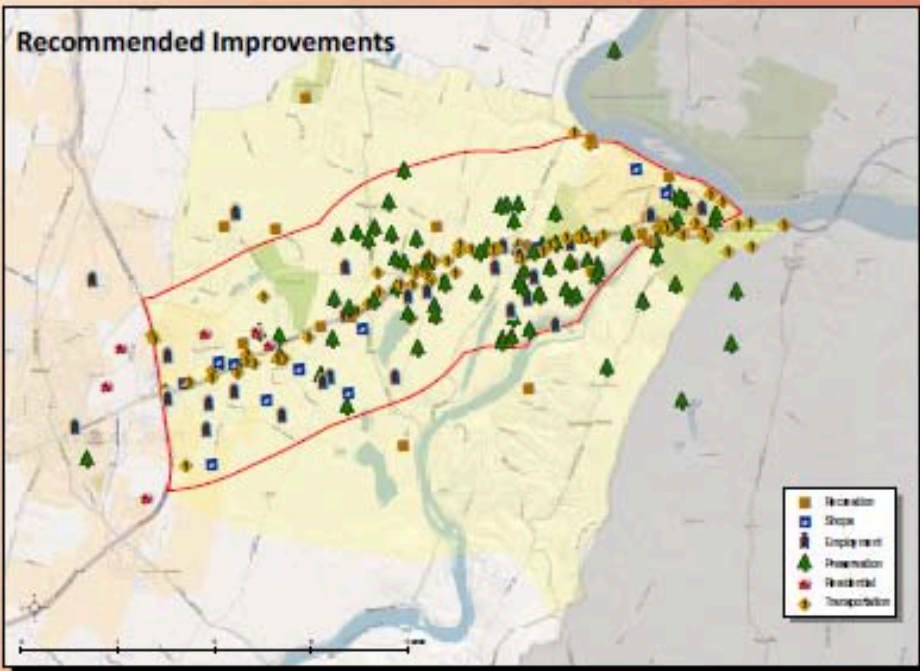
INTERACTIVE MAP

4

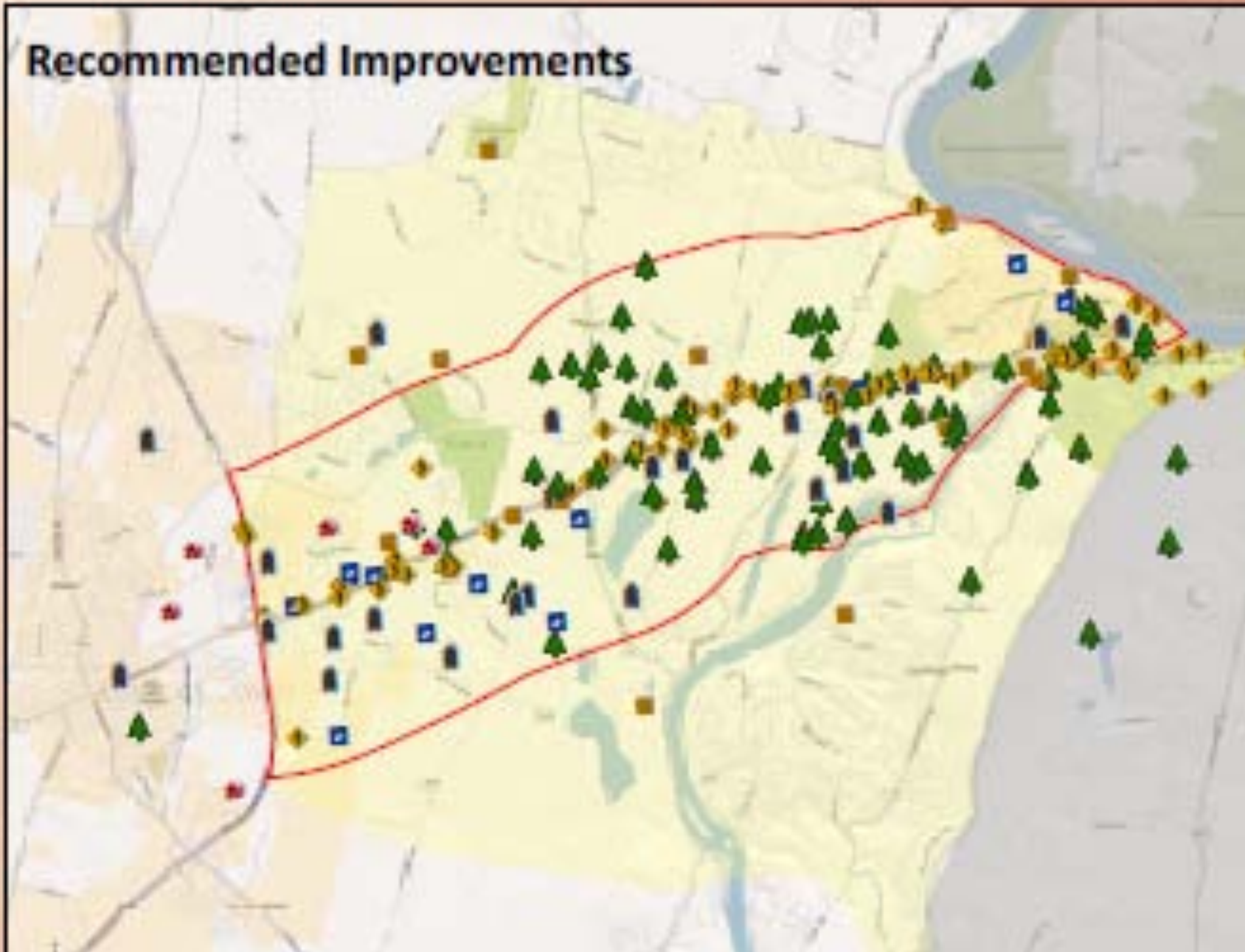
SURVEY

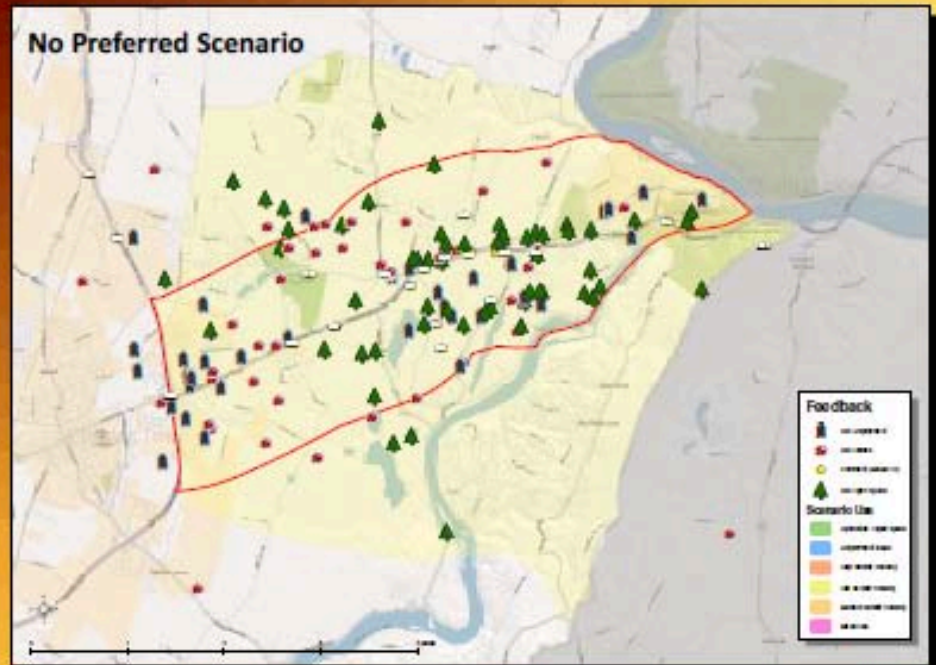
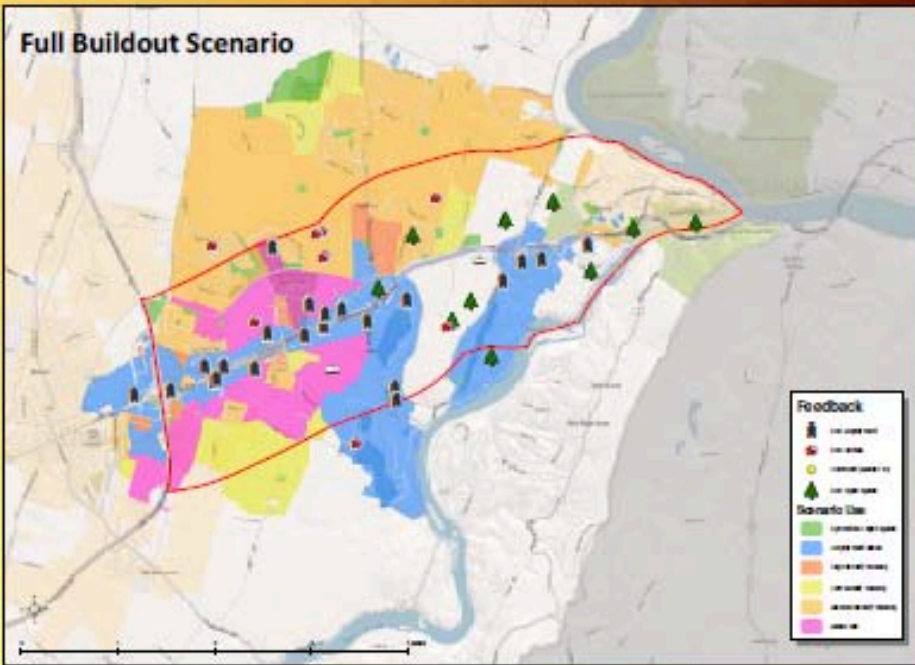
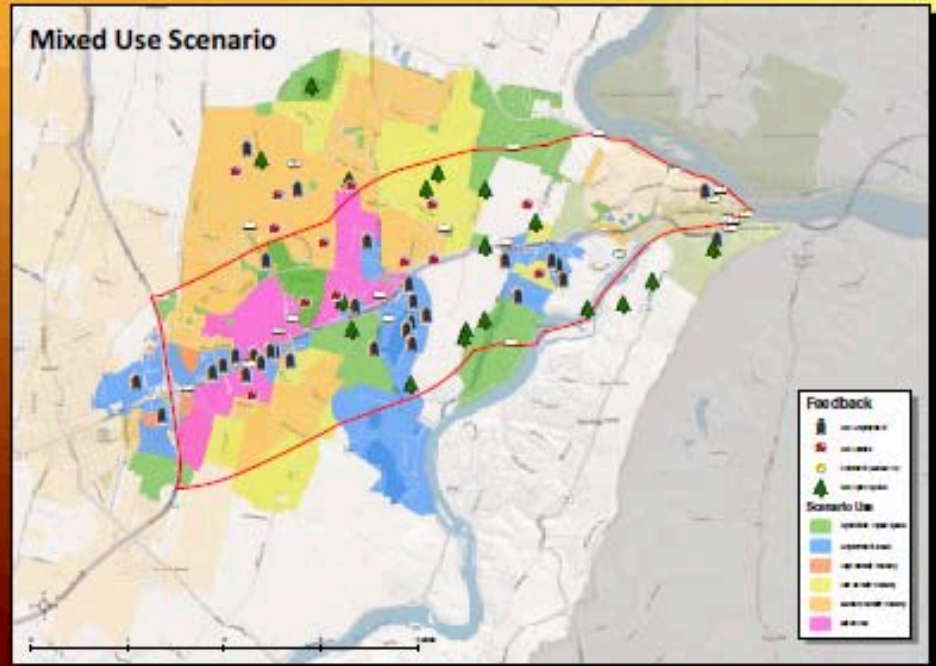
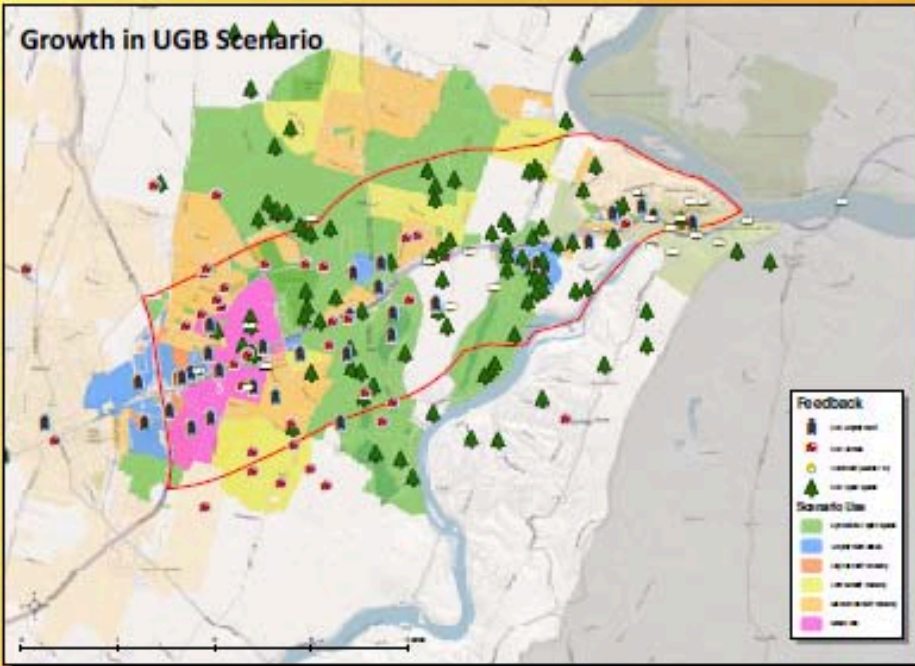
5

STAY INVOLVED



Recommended Improvements







MetroQuest

Engagement Made Easy

Powerful
Flexible
Cost-Effective



Web



Workshop



Kiosk



City Shaping - City of North Vancouver

Progress Compare Yourself

1 Rate Us

How are we doing?

Here are your top five priorities. Let us know how we are doing on your top priorities by selecting a star rating for each. You can include a comment with each if you wish.

- 1 Economic Growth**
How are we doing with promoting local business opportunities and creating jobs in the city?
poorly ☆☆☆☆ well
- 2 Cultural Diversity**
How are we doing with welcoming and including all cultures and newcomers?
poorly ☆☆☆☆ well
- 3 Vibrant Streets & Spaces**
How are we doing with encouraging vibrant streets and spaces?
poorly ☆☆☆☆ well
- 4 Parks & Trails System**
How are we doing with enhancing the city's parks and trail system?
poorly ☆☆☆☆ well
- 5 Public Safety**
How are we doing with ensuring a safe community?
poorly ☆☆☆☆ well

Envision Bay Area: A Silicon Valley Community Foundation initiative

View introduction / help video

4 See Outcomes

What impacts do your choices have?

Your rating: ☆☆☆☆

By 2035, compared to the Current Trend (A), your choices save...
370 square miles of open space.

Current Trend: 490 | Your Choices: 120

Compared to the current trend (A), your choices (C) save **370** square miles of open space, the equivalent of **3** San Franciscos.

Order priorities by: Your Priorities

- Easy and low cost parking
- Lever costs and taxes
- Safer access to schools
- Conserve open space
- Less local traffic
- Clean air
- Lever carbon emissions

Worse than today | Better than today

Send Feedback | Share

Your Choices: **Keep Homes Here** and **More Urban Development**

Likely Future: **Urban containment & city-centered growth**

In this future, more people live in compact and walkable neighborhoods. By spreading out less, more people are closer to work and shopping, reducing travel distances. This future encourages the development of enough housing to accommodate available jobs in the region.

An Initiative of SILICON VALLEY community foundation with Lead Partner GREENBELT ALLIANCE

Claremore 2050 - Putting the Plan to Work

Energy & Emissions | Community Input | Related Projects

Planning Goals

- Commuting & Travel
- Housing Options
- Energy & Emissions
- Natural Areas
- Infrastructure
- Street Life & Culture
- Access to Transit
- Economic Growth

Executive Summary About the Planning Goals

Contact Us What's Next?

Like: 26 | Tweet: 97



CMAP

GO TO 2040





ABOUT CMAP

Established in 2005 by the IL General Assembly at the urging of local elected officials and business leaders.



ABOUT CMAP

Mission: to plan comprehensively for economic prosperity and quality of life.



ABOUT CMAP

**CMAP serves the third largest
U.S. metropolitan region:**

7 Counties

284 Municipalities

Over 1,200 units of local government



ABOUT CMAP

**CMAP serves the third largest
U.S. metropolitan region:**

7 Counties

284 Municipalities

Over 1,200 units of local government



ABOUT CMAP

**CMAP serves the third largest
U.S. metropolitan region:**

7 Counties

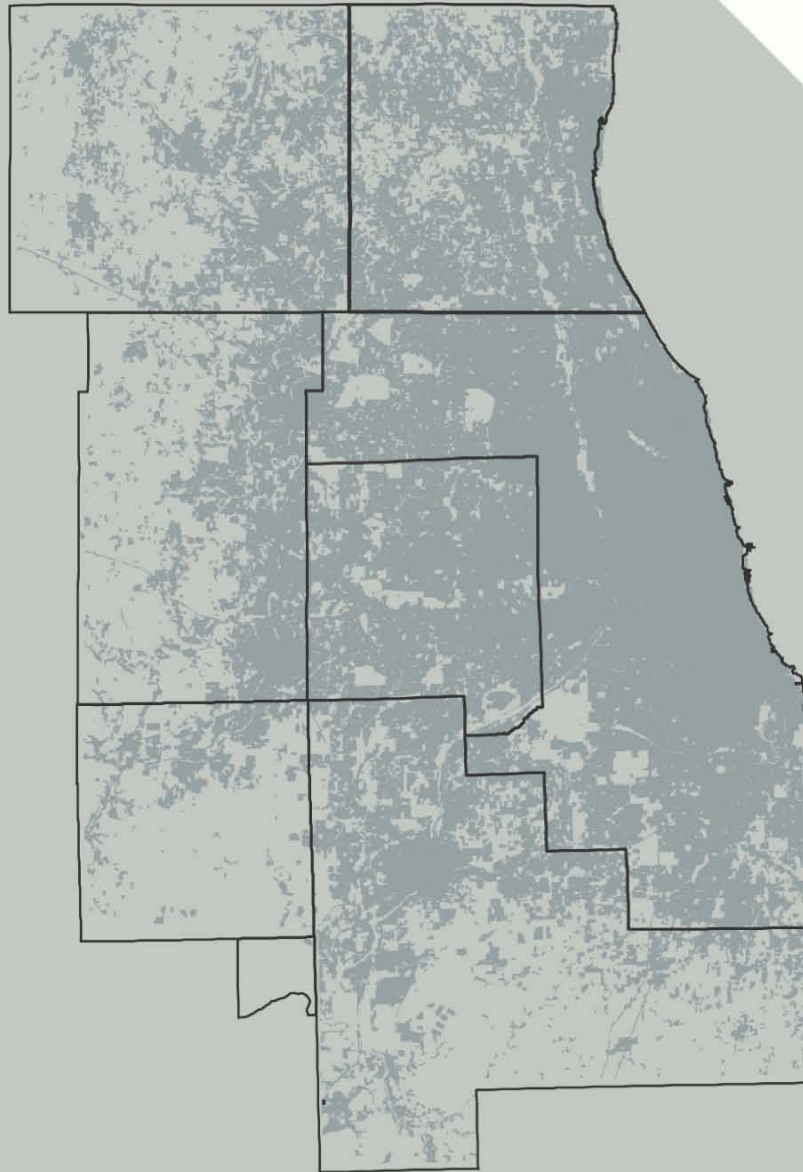
284 Municipalities

Over 1,200 units of local government



DEVELOPED AREA, 2005

Source: U.S. Environmental Protection Agency and CMAP



METRO QUEST GO TO 2040



VISIT 2040



ENTER

Take a quick tour. Change the future through a couple of choices and spend a little time in 2040! (Best with speakers on) [¿Preferies español? Entra aquí.](#)

About GO TO 2040

Population in metropolitan Chicago is expected to reach nearly 11 million by 2040. To accommodate 2.8 million new residents, our region has urgent decisions to make in the very near future. GO TO 2040 is the Chicago Metropolitan Agency for Planning (CMAP) campaign to guide development and investment decisions to accommodate our region's growth.

[Click here](#) to really dig into CMAP's three sample scenarios.

INVENT 2040

The screenshot shows the INVENT 2040 interface. On the left, there are several panels for selecting scenarios: Development Density (Low density growth, Current pattern of growth, Moderately compact growth, Highly compact growth), Development Location (Undeveloped, Community and metropol, Metropolitan centers), Road Network (Stagnant maintenance, Moderate increase, Significant increase), Transit System (Stagnant maintenance, Moderate increase, Significant increase), Transportation Policy (Fair driving, Support current use, Support alternatives), and Employment Policy (Reduce sprawl). In the center is a map of Chicago with a color-coded density overlay. On the right, there's a 'LEGEND' section with color swatches for High Density (red), Medium Density (orange), Low Density (yellow), and Very Low Density (green). Below the legend are various sliders and buttons for 'Land Consumption', 'Housing Density', 'Transportation Choice', 'Commuter Time', 'Energy Use', 'Water Use', and 'Government Costs'. A 'More About This Result' button is at the bottom.

ENTER

Get creative. Make choices about the future and see maps and graphs showing what life might be like in 2040. Send feedback on issues you care about and get your friends involved!

About MetroQuest

Use the tools above to create your own growth scenarios and compare them to others. Experiment with trade-offs regarding transportation, housing, economic development, open space, the environment, and other quality-of-life issues.

COMPARE 2040



ENTER

Go even deeper. Dig into the GO TO 2040 scenarios and see how they stack up against each other and scenarios you build yourself.

www.GOTO2040.org

[Disclaimer & Privacy](#)



ELECTROLINE

THIS SALE
GOTO2040.ORG

KWH
24.7

PER KWH
00.07

**DO YOU WANT ALTERNATIVES?
HAVE YOUR SAY. GOTO2040.org**

Chicago Metropolitan Agency for Planning

**WHICH WAY SHOULD THE WIND BLOW?
HAVE YOUR SAY. GOTO2040.org**

Chicago Metropolitan Agency for Planning



CMAP



GO TO

20

40

Livable Communities





THANK YOU

Erin Aleman

ealeman@cmap.illinois.gov

312.386.8816

**Senior Regional Planner
Chicago Metropolitan Agency for Planning**

www.cmap.illinois.gov